



The Morpho HRX DV Operator Training Class is a course based on an advanced Dual View X-ray system designed for areas where X-ray security screening is crucial. Each student will learn how to properly operate the system as well as how to use image processing and zoom features to interpret X-ray images. With dual X-ray generators, the HRX DV is capable of generating two perspectives per object scanned; one vertically view, and one horizontally view. The simulator course can be used with one monitor or with two monitors to simulate the actual Dual View system. The Dual View, Dual Monitor simulator gives the student an authentic experience that mirrors the actual setup of the HRX DV system, best preparing the student for an operational setting.

Key Features

- Individualized, self-paced instruction
- Standardized instruction
- Customized remediation and testing
- Secure records management system
- Detailed training reports
- Realistic simulation of machine

Key Benefits

- Cost Effective - Safe and cost effective way to simulate use of the machine and practice interpreting scans for threat objects.
- Results Oriented - Custom simulation sessions focus on student needs to increase performance.
- Automated Remediation - Custom remedial training based on test performance.
- Efficient - Use the training anytime, anyplace and at the student's own pace.
- Flexible - Modify the testing and images to meet local needs.

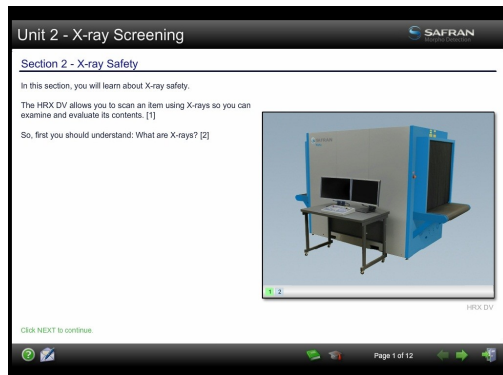
Course Topics

X-ray Screening - The student will learn about the fundamentals of X-ray screening, safety precautions to follow, and the basics of X-ray interpretation.

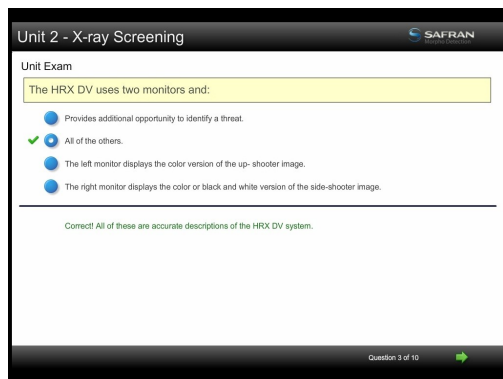
Operating the System - Teaches the student about the system's core parts and how to use its power and navigation controls.

Viewing X-ray Images Using the HRX DV - The student will learn the steps for scanning items and how to view X-ray images using various functions.

HRX DV Advanced Functions - Teaches the student how to use the system's advanced functions.



Operator Course Screen



Unit Exam



Dual View, Single Monitor Simulation Course Screen

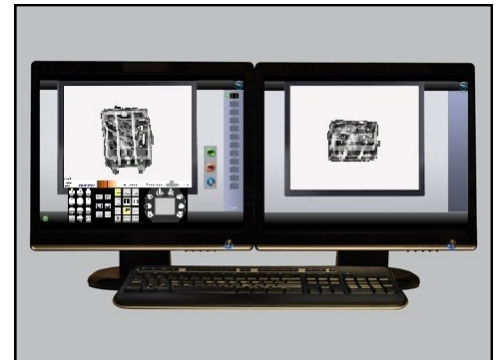


Simulation

X-ray Interpretation Practice – Each student can practice their X-ray interpretation skills using an on-screen simulation of the system. The X-ray image library in the simulation contains both innocent and threat items. The industry specific image library will expose the student to a variety of threat items. The student will improve their skills by advancing through three levels of difficulty based on image complexity and orientation of the threat.

As each student works through practice sessions, a sophisticated algorithm monitors and tracks actions and decisions made for each image. Upon completion of a practice session, the algorithm determines if the student had difficulty correctly responding to any X-ray images. Based on the student’s performance, subsequent practice sessions are tailored to meet the specific training needs of the student. This leads to more efficient and effective training, which results in higher detection rates and lower false alarm rates.

Ongoing X-ray Interpretation Training – The X-ray library contains a large number of threat items. The key to high hit rates and low false alarms rates is to have the skills to effectively recognize real threats. To do this, each student must develop knowledge of what a wide variety of threats look like under X-ray. The more different types of threats a student sees during training, the better prepared he will be to identify these threats in an operational setting. Trainers can also tailor training sessions to focus on specific threats of concern for their organization. The large image library of threats and the adaptive algorithm provide an effective way to continuously increase the detection skills of each student.



Dual View, Dual Monitor
Simulation Course Screen

Courseware Specifications

Applications:
Initial

Delivery Options:
CBT, WBT

Estimated Seat Time:
Operator Course: 2.5 - 3 Hours
Simulator Course: 2 Hours*

Image Libraries:
CBS

Languages:
English

Note: Courseware availability is based upon selection from the above specifications.

* Ongoing image interpretation practice is highly recommended to ensure screener proficiency.

Innovative Solutions. Superior Training. Accelerated Performance.

www.safe-passage.com

info@safe-passage.com

Corporate Headquarters
333 Metro Park
Rochester, New York 14623
UNITED STATES
Tel: +1 585 292 4910
Fax: +1 585 292 4911

ATS - Aviation Training & Services
Luiz Faccini, 416 - 2º floor -
Guarulhos - SP - Brazil
07110-000
Tel: +55 11 2229-8938
Cel: +55 11 96631-6965

